



# FERGUSON LIBRARY

## YOUTH SERVICES

FEBRUARY 2026

### How to Contact Us



Main Library Borrowers Services: 203 351-8261

Main Library Adult Services/Reference Desk:

203 351-8221

Youth Services:

Main Library: 203 351-8242

Harry Bennett Branch: 203 351-8294

South End Branch: 203 351-8280

Weed Memorial & Hollander Branch: 203 351-8287

West Side Branch: 203 351-8420

**The library will be closed Monday, February 16 for Presidents Day.**

### Black History Month Civil Rights Film Series

Assorted dates in February at ML

Rated PG-13. Teens and adults. **RR.**

**Short documentary films:**

***Forgotten Hero: Walter White and the NAACP* and  
*With a Made-Up Mind: The History of the Black Vote  
in South West Florida***

**Sunday, February 1 from 2 to 4:30 p.m.**

**Full-length documentary: *Forgotten Hero:  
Walter White and the NAACP***

**Sunday, February 8 from 2 to 4:30 p.m.**

**Feature film: *Marshall* (2017)**

**Wednesday, February 18 from 6 to 8 p.m.**

**Feature film: *Ghosts of Mississippi* (1996)**

**Wednesday, February 25 from 6 to 8 p.m.**



**Movies that Build Community:**

***The Six Triple Eight***

**Friday, February 27 from 6:30 to 9 p.m. at ML**

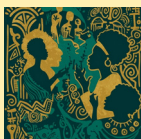
The true story of the 6888 Postal Battalion, an all-Black battalion of 855 women who faced discrimination during WWII while fixing a three-year backlog of undelivered mail. Discussion to follow with Dr. Sheila Kearney. Rated PG-13. Teens and adults. **RR.**  
*Presented in partnership with the Avon Theatre.*



**African Storytelling Reimagined**

**Saturday, February 28 from 12  
to 2 p.m. at ML**

Storytime, dancing, authentic artifact display, stickers and activity sheets for children to take home featuring African folktale and language picture books by Ada Ari. All ages. **RR.**



### 2026 Stamford Literary Competition Entries Due February 6

Get those entries in! The Literary Competition is open to students in grades 3 to 12 who live in or attend school in Stamford. For rules, categories and the entry form, visit [fergusonlibrary.org/friends](http://fergusonlibrary.org/friends). Visit [fergusonlibrary.org/friends](http://fergusonlibrary.org/friends).

### Teen Art Contest 2026 Exploring the Summer Learning Club Theme: *Plant a Seed, Read*



Contest requirements:

- Open to Stamford students in grades 6 to 12.
- Paper entries must include your name, address, phone, email, school and grade on the back.
- Graphic design/digital entries are also accepted. Specs: minimum 300 dpi, 8.5x11 inches.
- AI generated material forbidden.
- Contest opens March 1.
- Entries due April 6.

The winner will receive a Michaels \$50 gift certificate. Winning submission will be displayed on assorted Summer Learning Club materials.

Submit entries to the Youth Services Department at the Main Library, or email Samantha Delgado at [sdelgado@fergusonlibrary.org](mailto:sdelgado@fergusonlibrary.org).

### Artist Workshops for the Teen Art Contest Sketching 101

**Saturday, February 14 from 12 to 1:30 p.m. at ML**

**Graffiti Art**

**Saturday, February 28 from 2 to 3:30 p.m. at ML**

Learn art techniques from artist Wes Bernadel and work on your submission for the contest. Grades 5 to 12. **RA.**

### Family Programs

**Friends of Ferguson Library Mini-Golf**

**Saturday, February 21 and Sunday,  
February 22 from 10 a.m. to 4 p.m. at HB**

Putt your way through an indoor mini-golf course set up amid the stacks. Tickets are \$5 per person, per round; pay at check-in. All ages; ages 3 and younger play for free. Snacks will be served. **RR.**

*Title Sponsor: First County Bank.*



### Celebrate Lunar New Year

**Sunday, February 22 from 2 to 3:30 p.m.  
at ML**

The commemoration of the Year of the Horse will include traditional dances, storytelling, a martial arts demonstration, paper crafts, calligraphy and face-painting. All ages. **RA.**



**Our programs are generously supported by the Friends of Ferguson Library.**

## CHILDREN'S STORYTIMES

For Main Library Storytimes, registration opens six days before each program date. All children must be accompanied by a caregiver.

### Sing & Stomp

**Tuesdays, February 3, 10, 17 & 24**  
**from 10:30 to 11 a.m. at ML**  
Ages 18 months to 4 years.

### Budding Bookworms

**Tuesday, February 3**  
**from 2:30 to 3:15 p.m. at WMH**  
Story and craft. Ages 2 to 5. **RR.**

### Family Storytime

**Wednesdays, February 4, 11, 18 & 25**  
**from 10:30 to 11:30 a.m. at ML**  
Ages 18 months to 5 years. **RR.**

### Storytime with Sarah

**Mondays, February 9 & 23**  
**from 10:30 to 11 a.m. at HB**  
Ages 2 and younger. **RA.**

### Wee Ones @ Weed

**Mondays, February 9 & 23**  
**from 10:30 to 11 a.m. at WMH**  
Ages 3 and younger. **RR.**

### Sensory Storytime

**Tuesdays, February 10 & 24**  
**from 11 to 11:30 a.m. at HB**  
Ages 3 to 6. **RR.**

### Cuddlers & Crawlers

**Wednesdays, February 11, 18 & 25**  
**from 10:30 to 11 a.m. at HB**  
Ages 12 months and younger; pre-walking only. **RR.**

### Toddler Stay & Play

**Wednesday, February 11**  
**from 10:30 to 11 a.m. at WMH**  
Ages 3 months to 3 years. **RR.**

### Bebés Bilingües

**Wednesdays, February 11, 18 & 25**  
**from 12:30 to 1 p.m. at HB**  
Spanish-language storytime. Ages 2 and younger. Siblings welcome. **RA.**

### Storytime Stomp

**Fridays, February 13, 20 & 27**  
**from 10:30 to 11 a.m. at HB**  
All ages.

### Babytime

**Fridays, February 20 & 27**  
**from 10:30 to 11 a.m. at ML**  
Ages 18 months and younger. Siblings welcome. **RR.**

### Bilingual Storytime

**Thursday, February 26**  
**from 10:30 to 11 a.m. at ML**  
English and Spanish. Ages 18 months to 4 years. **RR.**

## CHILDREN'S PROGRAMS

### Video Game Club

**Monday, February 2**  
**from 3:30 to 4:30 p.m. at HB**  
Use our Nintendo Switch to game on the large screen in the auditorium. Ages 10 and older.

### Let's Talk

**Mondays, February 2, 9 & 23**  
**from 4:15 to 5 p.m. at ML**  
Practice your English conversation skills in a group. All levels welcome. Grades 2 to 5.

### Homework Help

**Tuesdays, February 3, 10, 17 & 24**  
**from 4 to 5:30 p.m. at WS**  
One-on-one and group help with math, science, social studies and other subjects. Grades 1 to 8. **RA.**

### Get Your Game On!

**Wednesdays, February 4, 11, 18 & 25**  
**from 3:30 to 5:30 p.m. at WS**  
Play chess, checkers, KerPlunk or Nintendo. All ages. **RA.**

### Preschool Movie Matinees

**Thursdays, February 5, 12, 19 & 26**  
**from 3 to 3:30 p.m. at WS**  
Enjoy picture book videos of beloved children's classics. Snacks will be served. Ages 18 months to 5 years. **RA.**

### Toddler Concert: A Take Your Child to the Library Day Event

**Saturday, February 7**  
**from 3 to 3:30 p.m. at ML**  
Performances on piano and violin, plus play time with toy instruments. Snacks will be served. Ages newborn to 5 years. **RA.**

### Cookies & Coloring

**Tuesday, February 10**  
**from 4 to 4:45 p.m. at HB**  
Enjoy an hour of relaxation through the meditative act of coloring. Cookies will be served. Ages 5 and older. **RR.**

### Crafternoon: Heart Mobiles

**Tuesday, February 10**  
**from 4 to 4:45 p.m. at WMH**  
Use recycled materials to make a heart mobile to celebrate Valentine's Day. Supplies will be provided. Grades 3 to 8. **RR.**

### Baby Social Club

**Thursday, February 12**  
**from 10:30 to 11:30 a.m. at ML**  
Meet new parents and caregivers of children ages newborn to 5 years. **RA.**  
Presented in partnership with Stamford Cradle to Career and Help for Kids.

### Little Picassos Art Club

**Friday, February 13**  
**from 4 to 5 p.m. at HB**  
Learn, paint, draw and get a little messy! Each session you will explore the work of a different artist and create your own masterpiece. Ages 2 and older. **RR.**



### **Baby Winter Formal**

**Saturday, February 14**

**from 2 to 4 p.m. at ML**

Dust off your tiny bowties and velvet dresses for an afternoon of dancing, crafts and snacks.

Ages 18 months to 4 years. **RA.**

### **Beyblade Workshop**

**Sunday, February 15**

**from 2 to 3:30 p.m. at ML**

Learn about Beyblade, the competitive spinning top game that is popular in Japan. Knock out opponents and win points by outspinning others. Ages 8 to 12. **RR.**

### **LEGO® Play Day**

**Tuesday, February 17**

**from 4 to 4:45 p.m. at WMH**

Design and build using LEGO® blocks. Take a photo of your masterpiece before you disassemble. Ages 5 to 12. **RR.**



### **Little's Art Club: Jim Dine**

**Wednesday, February 18**

**from 2 to 3 p.m. at ML**

Explore the works of Jim Dine and create a replica of his signature heart designs. Supplies will be provided.

Ages 2 and older. **RA.**

### **Lunar New Year:**

**Game, Story & Craft**

**Thursday, February 19**

**from 2 to 3:30 p.m. at ML**

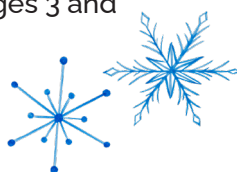
Enjoy a game and story about the Chinese zodiac, then decorate your own glass lantern. Supplies will be provided. Grades K to 8. **RR.**

### **Curious Creators**

**Friday, February 27**

**from 3 to 3:45 p.m. at HB**

A hands-on STEAM adventure for young minds to explore science, technology, engineering, art and math through experiments and creative projects. Ages 3 and older. **RR.**



## **TEEN PROGRAMS**

### **Mellow Mondays**

**Mondays, February 2, 9, 16 & 23**

**from 3:30 to 4:30 p.m. at WS**

Start the week with stress-reducing activities like reading, arts, crafts and building projects. Supplies will be provided. Snacks will be served.

All ages.

### **Dungeons & Dragons**

An afternoon of adventure playing among fantastical heroes who brave dangerous situations with swords, spells and wits. **RA.**

#### **Teen Edition**

**Wednesdays, February 4, 11, 18 &**

**25 from 3:30 to 5:30 p.m. at ML**

Ages 12 to 16.

#### **YA Edition**

**Thursdays, February 5, 12 & 26**

**from 3:30 to 5:30 p.m. at ML**

Ages 16 to 18.

### **Sit & Stitch**

**Wednesdays, February 11 & 25**

**from 4 to 5 p.m. at ML**

Stitch, knit, crochet, needlepoint or quilt. Learn how to knit, too. Bring your own materials or use ours. Ages 12 and older. **RR.**

### **Sci-Fi Book Club: Solaris**

**Wednesday, February 11**

**from 7 to 8 p.m. at ML**

When Kris Kelvin arrives at the planet Solaris to study the ocean that covers its surface, he finds a painful, hitherto unconscious memory embodied in the living physical likeness of a long-dead lover. Teens and adults. **RR.**

### **Documentary Screening: The Hobby**

**Thursday, February 12**

**from 6 to 7:45 p.m. at ML**

*The Hobby: Tales from the Tabletop* explores modern board gaming and the communities built around play. Teens and adults. **RA.**

### **Avon on Tour:**

**Movies that Build Community**

**Fridays, from 6:30 to 9 p.m. through March 27 at ML**

Teens and adults. **RR.**

Presented in partnership with the Avon Theatre.

**February 13: *BlackKkKlansman***  
(2018)

**February 20: *The Imitation Game***  
(2014)

**February 27: *The Six Triple Eight***  
(2024)

### **Silent Book Club**

**Saturday, February 14**

**from 2 to 3 p.m. at HB**

Read the book of your choice in the quiet company of others. Teens and adults. **RR.**

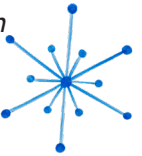
### **LGBTQ+ Social Book Club**

**Saturday, February 14**

**from 3 to 4 p.m. at HB**

Discuss what books you are reading, make connections and enjoy a treat. Those who identify as LGBTQIA+ and allies are welcome. Teens and adults. **RA.**

Presented in partnership with Stamford Pride.



### **De-Stress Fest**

**Wednesday, Thursday & Friday,**

**February 18, 19 & 20**

**from 12:30 to 2 p.m. at ML**

De-stress with your friends and enjoy snacks, games and a craft. Grades 6 to 12.

## **SAVE THE DATE**


**Youth Astronomy Network Workshop**

**Sundays, March 1, 8, 15, 22 & 29**

**from 2:30 to 4 p.m. at ML**

Five-session weekly workshop about robotic telescopes, astrophotography, image analysis, space exploration and science/STEM careers. Complete all five sessions and showcase your findings in the Deep Space Dive science fair in April. Ages 10 to 12. **RR.**  
Presented in partnership with the Harvard-Smithsonian Center for Astrophysics.





# 1,000 BOOKS

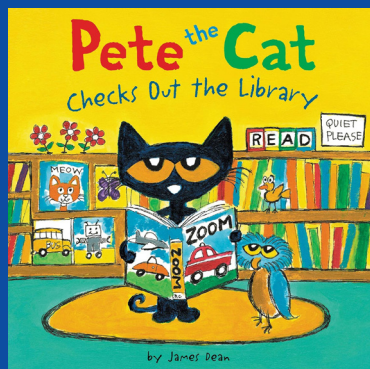
## BEFORE KINDERGARTEN

Grow a Reader at the Ferguson Library



Families are invited to join the 1,000 Books Before Kindergarten program, a nationwide challenge encouraging parents and caregivers to read aloud to children. Reading just one book a night can help children develop essential early literacy skills, close the vocabulary gap, and foster a lifelong love of reading. The program is available at all our branches to families with children from birth to kindergarten. For more information, visit our Youth Services Information Desks.

### FERGUSON FAVORITES



## 100 Best Picture Books



Scan here to access this and other booklists.



Learn more about all our Youth Services program by scanning this code.

Follow us here:



### FERGUSON LIBRARY

#### MAIN LIBRARY, DIMATTIA BUILDING

One Public Library Plaza  
203 964-1000

Monday through Thursday 10 to 8  
Friday 10 to 6  
Saturday 10 to 5  
Sunday 1 to 5

#### HARRY BENNETT BRANCH

115 Vine Road  
203 351-8291

Monday, Tuesday, Thursday & Friday 10 to 6  
Wednesday 10 to 7  
Saturday 10 to 5

#### SOUTH END BRANCH

203 351-8280

Check online for reopening updates.

#### WEED MEMORIAL & HOLLANDER BRANCH

1143 Hope Street  
203 351-8285

Monday, Wednesday & Thursday 10 to 6  
Tuesday 12 to 7  
Saturday 10 to 5

#### WEST SIDE BRANCH

245 Selleck Street  
203 351-8420

Monday through Thursday 3 to 6

#### FRIENDS BOOK SHOPS AT THE FERGUSON LIBRARY

##### Main Library

Monday through Thursday 11 to 6  
Friday & Saturday 11 to 5  
Sunday 1 to 5

##### Harry Bennett Branch

Monday through Saturday 10 to 5

##### BOOKMOBILE

Check our online calendar at  
[fergusonlibrary.org/locations-hours/bookmobile](http://fergusonlibrary.org/locations-hours/bookmobile)

##### PASSPORT SERVICES

##### Main Library Passport Office

Appointments take precedence and are recommended.

For more information or to make an appointment, call 203 351-8298.

Monday through Thursday 10 to 7  
Friday 10 to 5  
Saturday 10 to 4  
Sunday 1 to 4

##### Harry Bennett Passport Office

Walk-in only  
Wednesday 10 to 6  
Saturday 10 to 4